



NORTHWEST PORTLAND, BONNY SLOPE 97229

DOGWOOD A PLAN - LOT 1 | 3798 SQFT | 4 BDRMS+ BONUS | 3.5 BATH | 2 CAR GARAGE

CONTACT FOR PRICING



EXPANSIVE GREAT ROOM W/ GAS FIREPLACE & CUSTOM BUILT-INS

GOURMET KITCHEN INCLUDES OVERSIZED ISLAND W/GAS COOKTOP

FORMAL DINING FEATURES WAINSCOTING & COFFERED CEILINGS

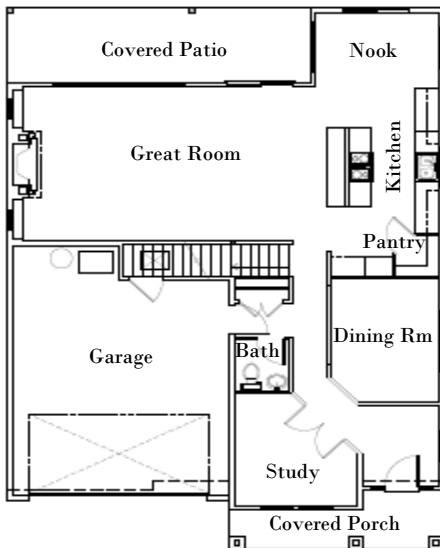
LUXURIOUS MASTER SUITE W/SOAK TUB, TILE SHOWER & GRAND WALK-IN CLOSET

MINI-SUITE W/ FULL BATH AND WALK-IN CLOSET ON 2ND LEVEL

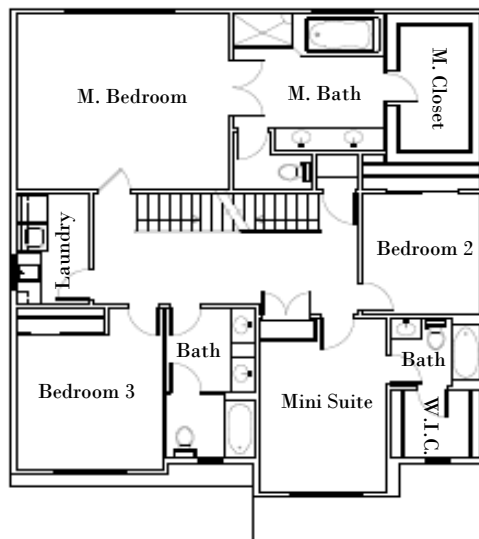
LARGE BONUS ROOM ON UPPER LEVEL

MAIN FLOOR DEN

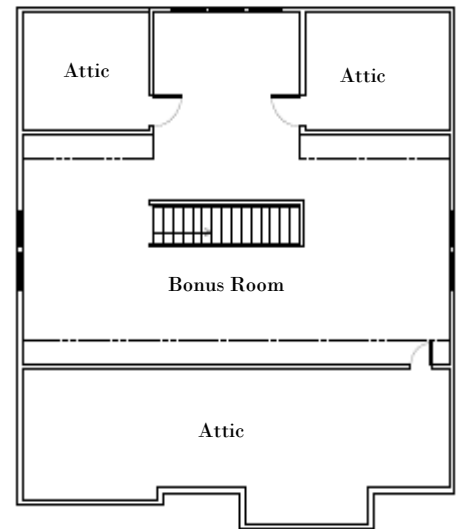
COVERED PATIO FOR YEAR-ROUND ENTERTAINING & ENJOYMENT



Main Level



2nd Level



Upper Level



For more information please contact Jim Cavanaugh at 503.730.8758 or Jim@JCavanaughProperties.com
 Jim Cavanaugh is a real estate broker with Keller Williams Sunset Corridor